



Solutions for Managing Noise, Vibration and Shock for the Bell Helicopters

EXCHANGE | REPAIR | SPARE

LORD Corporation is a diversified technology and manufacturing company developing highly reliable adhesives, coatings, motion management devices, and sensing technologies that significantly reduce risk and improve product performance. For more than 90 years, LORD has worked in collaboration with customers to provide innovative oil and gas, aerospace, defense, automotive and industrial solutions.

Aero Precision is LORD Corporation's aftermarket stocking distributor to the international military market for Rotor Dampers, Bearings and Rotors, and associated piece parts for Bell Helicopter platforms.



Pivot Bearing, Bonded

Lord P/N - REP412-010-106-101
OEM P/N - 412-010-106-101
Service - Repair Exchange



Damper Yoke Set

Lord P/N - J-16663-4
OEM P/N - 412-010-145-105
Service - Overhaul Exchange

ASK US HOW

LORD works in collaboration with customers to help them increase the value of their products

BENEFITS

- **Significant savings vs. buying new parts**
- **Reduce overall maintenance time and costs with support from LORDs experienced staff**
- **OEM Choice Supplier. No compromise on quality**

SUPPORTING

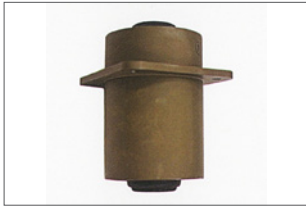
| Countries | Militaries |
|-------------|--------------------------------------|
| Thailand | Army, Navy, Airforce and Police |
| Indonesia | Army, Navy, Airforce and Police |
| Philippines | Army, Airforce and Coast Guard |
| Brunei | Airforce |
| Taiwan | Army, Navy, Airforce and Coast Guard |
| South Korea | Army, Navy, Airforce and Coast Guard |
| Japan | Coast Guard |
| Pakistan | Army and Airforce |

SUPPORTED PLATFORMS

Bell 204, 205, 206, 212, 412

CAGE CODE | **76005**

BELL 204, 205, 212



Bonded Tube Form Mounting
204-031-927-005
J-8085-6



Bonded Tube Form Mounting
204-031-927-007
J-8085-5



Cap Landing Gear Assy, Forward
212-030-436-007
J-14106-1



Repair Kit - Damper Assy
204-031-920-003
J-16656-1



Landing Gear Strap
212-030-436-007
J-15452-3



Landing Gear Strap
212-030-436-007
J-15452-4



Pylon Friction Damper
204-031-920-003
J-9797-6

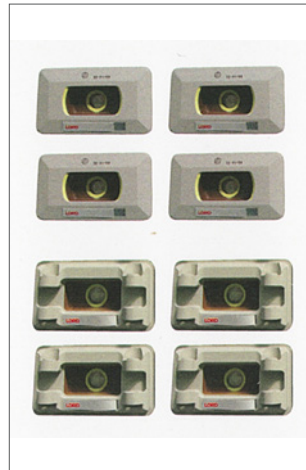
BELL 412



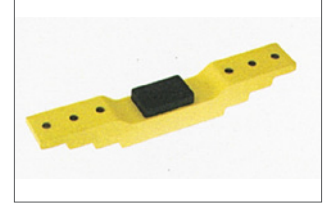
Main Driveshaft Boot
412-340-102-101
REP412-340-102-101



Pivot Bearing
412-010-106-101
REP412-010-106-101



Damper Yoke Set (Qty 4)
412-010-145-105 | J-16663-4
412-310-146-103 | J-16663-7



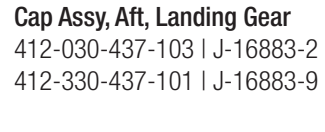
Landing Gear Strap
212-030-436-007
J-15452-3



Repair Kit - Damper Assy
204-031-920-003
J-16656-1



Pylon Friction Damper
204-031-920-003
J-9797-6

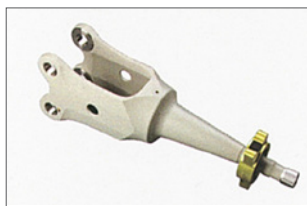


Cap Assy, Aft, Landing Gear
412-030-437-103 | J-16883-2
412-330-437-101 | J-16883-9

Rubber Bumper
412-330-437-103 | J-23381-5
Upgrade Coming Soon | J-23381-7



Pylon Isolator
204-031-927-107
J-8085-50



Spindle Bearing Assy
412-010-190-103 | 412-010-190-105
LB9-1062-8-2N | LB9-1062-18-1N

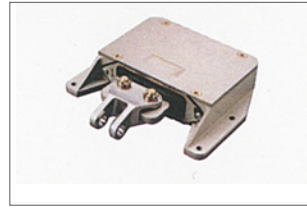
BELL 206LB



Arm, Flap Restraint
206-011-139-001
J-14258-3



Link Assy (Pylon)
206-033-554-101
LB6-1010-16-1



Mount Assy (Pylon)
206-030-539-101
LB9-1301-1-1



Elastomeric TR Trunnion Kit
206-011-812-005
LB2-1010-20-1
For first-time installation



Support Assy (Forward)
206-033-501-001
LB1-1010-4-1

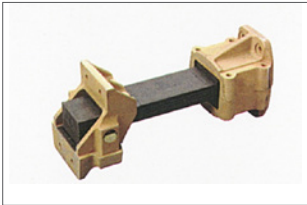


Stop Assy (Upstop/DownStop)
206-033-518-005 | J-15424-2
206-033-518-007 | J-15425-2



Support Assy, Isolation
206-033-544-001
LB9-1010-8-1

Elastomeric TR Trunnion Bearing
LB2-1010-20-2
For replacement installations



Flexure Assy, Nodal Beam
206-033-516-101 | LB9-1010-1-2



Restraint, Transmission
206-033-506-101 | J-15413-17
206-033-506-107 | J-15413-20
206-033-506-109 | J-15413-21



Tension Torsion Straps
206-310-004-101
LORD206-310-004-101
206-310-004-103
LORD206-310-004-103



Rear Support Assy
LH: 206-033-501-003 | LB1-1010-6-1
RH: 206-033-501-004 | LB1-1010-6-2
LH: 206-033-501-101 | LB1-1010-22-1
RH: 206-033-501-102 | LB1-1010-22-2

MD 500



Bearing (Tail Roto Teetering)
369A1724-7
LB2-1056-17-1

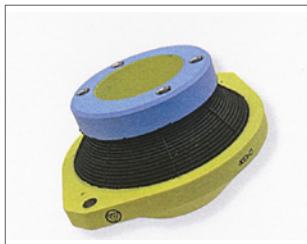


Fork Assy (Tail Rotor)
369D21721-21

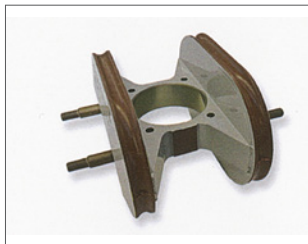


Main Rotor Damper
369D21400-503 | J-15640-6
Replaces 369D21400-501

BELL 407



Lead Lag Bearing
407-310-102-101 | LB4-1232-3-1
407-310-102-103 | LB4-1232-7-1



Main Rotor Hub Damper
407-310-100-105 | J-17750-24
407-310-100-107 | J-17750-25



Shear Bearing
407-310-101-101 | LB9-1232-4-1
407-310-101-105 | LB9-1232-6-1

| Airframe | Part Description | LORD P/N | OEM P/N | Service Type | |
|--|--|-----------------------------|-----------------|-------------------|-------------------|
| Bell 206 Series | Arm Assy (Flap Restraint) | J-14258-3 | 206-011-139-001 | Overhaul Exchange | |
| | Mount Assy (Pylon) | LB9-1301-1-1 | 206-030-539-101 | Overhaul Exchange | |
| | Support Assy (Forward) | LB1-1010-4-1 | 206-033-501-001 | Overhaul Exchange | |
| | Support Assy, LH | LB1-1010-6-1 | 206-033-501-003 | Overhaul | |
| | Support Assy, RH | LB1-1010-6-2 | 206-033-501-004 | Overhaul | |
| | Support Assy, LH | LB1-1010-22-1 | 206-033-501-101 | Overhaul Exchange | |
| | Support Assy, RH | LB1-1010-22-2 | 206-033-501-102 | Overhaul Exchange | |
| | Restraint, Transmission | J-15413-17 | 206-033-506-101 | Overhaul Exchange | |
| | Restraint, Transmission | J-15413-17 | 206-033-506-101 | Repair | |
| | Restraint, Transmission | J-15413-20 | 206-033-506-107 | Overhaul Exchange | |
| | Restraint, Transmission | J-15413-20 | 206-033-506-107 | Repair | |
| | Restraint, Transmission | J-15413-21 | 206-033-506-109 | Overhaul Exchange | |
| | Restraint, Transmission | J-15413-21 | 206-033-506-109 | Repair | |
| | Flexure Assy | LB9-1010-1-2 | 206-033-516-101 | Overhaul Exchange | |
| | Stop Assy (Upstop) | J-15424-2 | 206-033-518-005 | Overhaul Exchange | |
| | Stop Assy (Downstop) | J-15425-2 | 206-033-518-007 | Overhaul Exchange | |
| | Support Assy, Isolation | LB9-1010-8-1 | 206-033-544-001 | Overhaul | |
| | Link Assy (Pylon) | LB6-1010-16-1 | 206-033-554-101 | Overhaul Exchange | |
| | Bell 206 TT Strap | LORD206-310-004101 | 206-310-004-101 | PMA | |
| | Bell 206 TT Strap | LORD206-310-004103 | 206-310-004-103 | PMA | |
| | Elastomeric TR Trunnion Kit | LB2-1010-20-1 | | PMA/STC | |
| | Elastomeric TR Trunnion Bearing | LB2-1010-20-2 | | PMA/STC | |
| | Bearing, Flapping - Tail Rotor | LB2-1232-1-1 | 407-312-100-101 | Overhaul Exchange | |
| | Bell Mediums (204, 205, 212, & 412) | Damper Assy | J-9797-6 | 204-031-920-003 | Overhaul Exchange |
| | | Repair Kit for Damper Assy | J-16656-1 | 204-031-920-003 | PMA |
| | | Tube Form Mounting, Bonded | J-8085-6 | 204-031-927-005 | Overhaul Exchange |
| Tube Form Mounting, Bonded | | J-8085-8 | 204-031-927-007 | Overhaul Exchange | |
| Mount Assy | | J-8085-50 | 204-031-927-107 | Overhaul Exchange | |
| Cap Landing Gear Assy, Fwd | | J-14105-1 | 212-030-273-001 | Overhaul Exchange | |
| Cap Landing Gear Assy, Aft | | J-14106-1 | 212-030-274-001 | Overhaul Exchange | |
| Landing Gear Strap | | J-15452-3 | 212-030-436-007 | Overhaul Exchange | |
| Landing Gear Strap | | J-15452-4 | 212-030-437-007 | Overhaul Exchange | |
| Pivot Bearing, Bonded | | REP412-010-106-101 | 412-010-106-101 | Repair Exchange | |
| Damper Yoke Set (Qty 4) | | J-16663-4 | 412-010-145-105 | Overhaul Exchange | |
| Spindle | | LB9-1062-8-2N | 412-010-190-103 | Overhaul | |
| Spindle | | REPLB9-1062-8-2N | 412-010-190-103 | Repair | |
| Spindle | | LB9-1062-18-1N | 412-010-190-105 | Overhaul | |
| Spindle | | REPLB9-1062-18-1N | 412-010-190-105 | Repair | |
| Transmission Boot | | REP412-340-102-101 | 412-340-102-101 | Overhaul Exchange | |
| Cap Assy, Aft, Landing Gear | | J-16883-2 | 412-030-437-103 | Overhaul Exchange | |
| Bell Mediums (204, 205, 212, & 412) | | Damper Yoke Set (Qty 4) | J-16663-7 | 412-310-146-103 | Overhaul Exchange |
| | | Cap Assy, Aft, Landing Gear | J-16883-9 | 412-330-437-101 | Overhaul Exchange |
| | | Rubber Bumper | J-23381-5 | 412-330-437-103 | Overhaul Exchange |
| | Boot For Damper Assy | J-9993-3 | 4845-33084-00 | PMA | |
| | Housing for Damper Assy | J-9994-1 | 204-031-920-003 | PMA | |
| | Inner Member for Damper Assy | Y-16960-3-1 | 204-031-920-003 | PMA | |